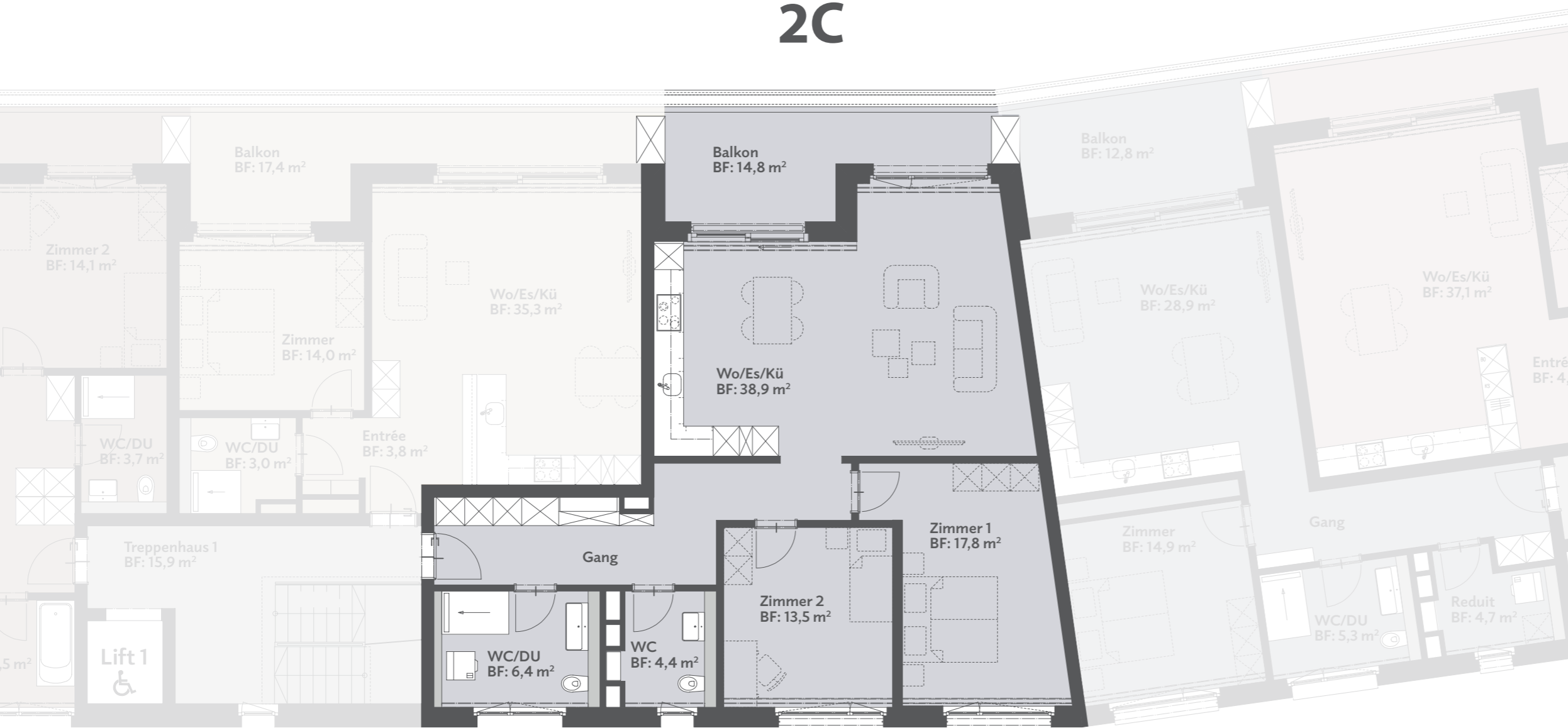


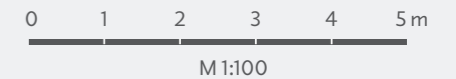
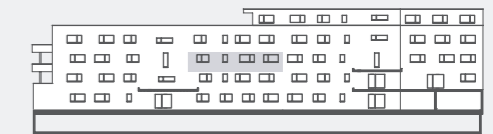


# 2C



### Wohnung 2C

Zimmer	3½
Wohnfläche	97,0 m <sup>2</sup>
Sitzplatz	14,8 m <sup>2</sup>
Keller	10,5 m <sup>2</sup>



Die Immobilien-Treuhänder  
Straub & Partner AG

Schafisheimerstrasse 14, Postfach  
5600 Lenzburg 1, 062 885 80 60  
info@straub-partner.ch  
www.straub-partner.ch