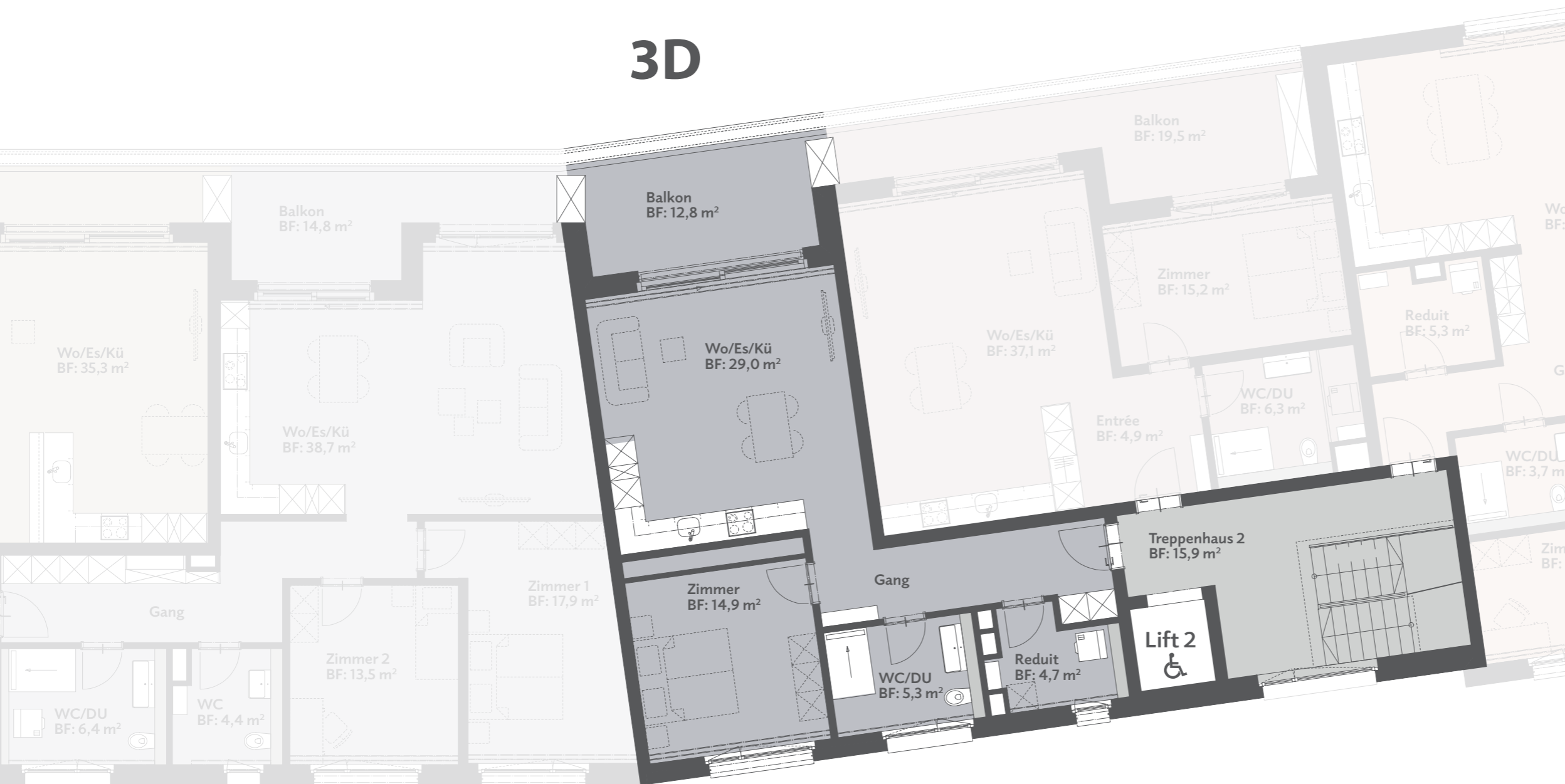


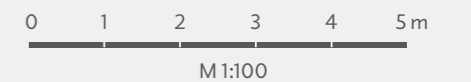
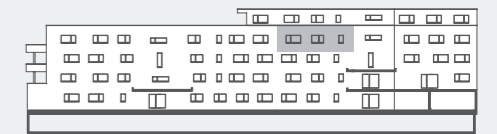


3D



Wohnung 3D

| | |
|------------|---------------------|
| Zimmer | 2½ |
| Wohnfläche | 66,0 m ² |
| Sitzplatz | 12,8 m ² |
| Keller | 10,0 m ² |



Die Immobilien-Treuhänder
Straub & Partner AG

Schafisheimerstrasse 14, Postfach
5600 Lenzburg 1, 062 885 80 60
info@straub-partner.ch
www.straub-partner.ch