

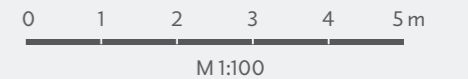
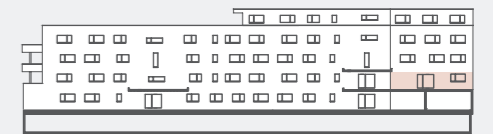


Büro/Praxis gross



Büro/Praxis gross

Fläche	138,0 m ²
Balkon	13,9 m ²



Die Immobilien-Treuhänder
Straub & Partner AG

Schafisheimerstrasse 14, Postfach
5600 Lenzburg 1, 062 885 80 60
info@straub-partner.ch
www.straub-partner.ch